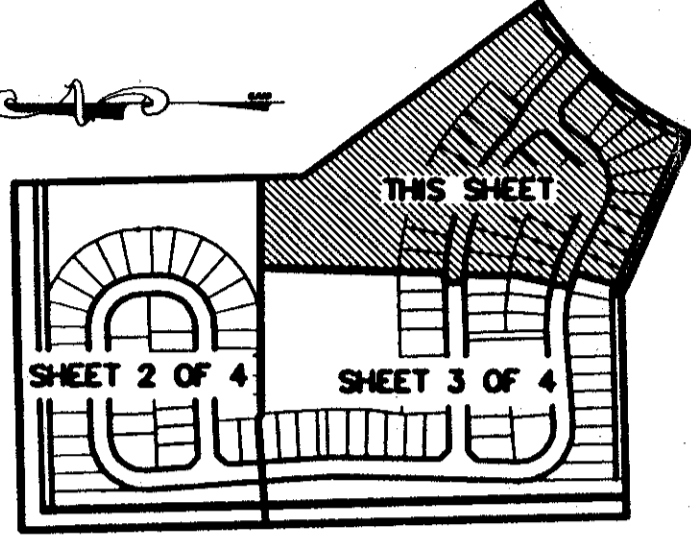


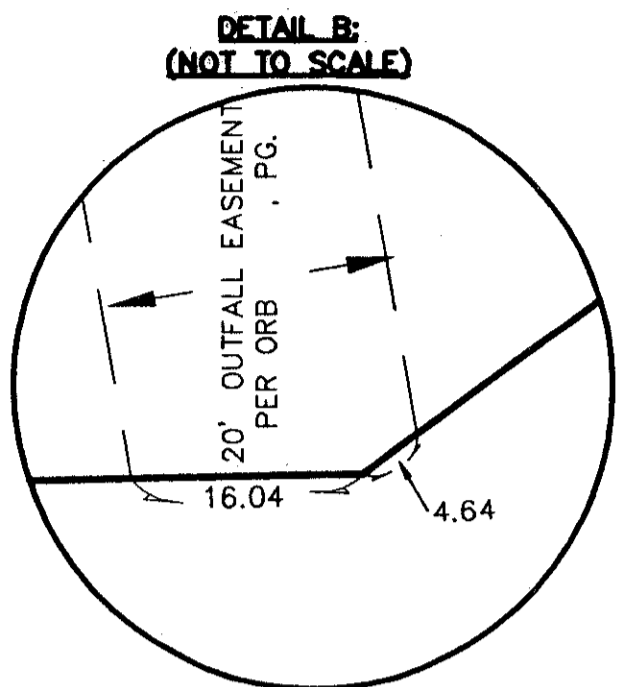
SMITH DAIRY WEST P.U.D.-PLAT No. 6
BEING A REPLAT OF PART OF BLOCK 38 OF PALM BEACH FARMS
COMPANY PLAT No. 3, AS RECORDED IN PLAT BOOK 2, PAGES
45 THROUGH 54 OF THE PUBLIC RECORDS OF PALM BEACH COUNTY, FLORIDA
IN PART OF SECTION 4 AND 5, TOWNSHIP 45 SOUTH, RANGE 42 EAST,
PALM BEACH COUNTY, FLORIDA
SHEET 4 OF 4
AUGUST 1997

GRID N: 818529.18
GRID E: 927868.36

0653-010



SHEET INDEX



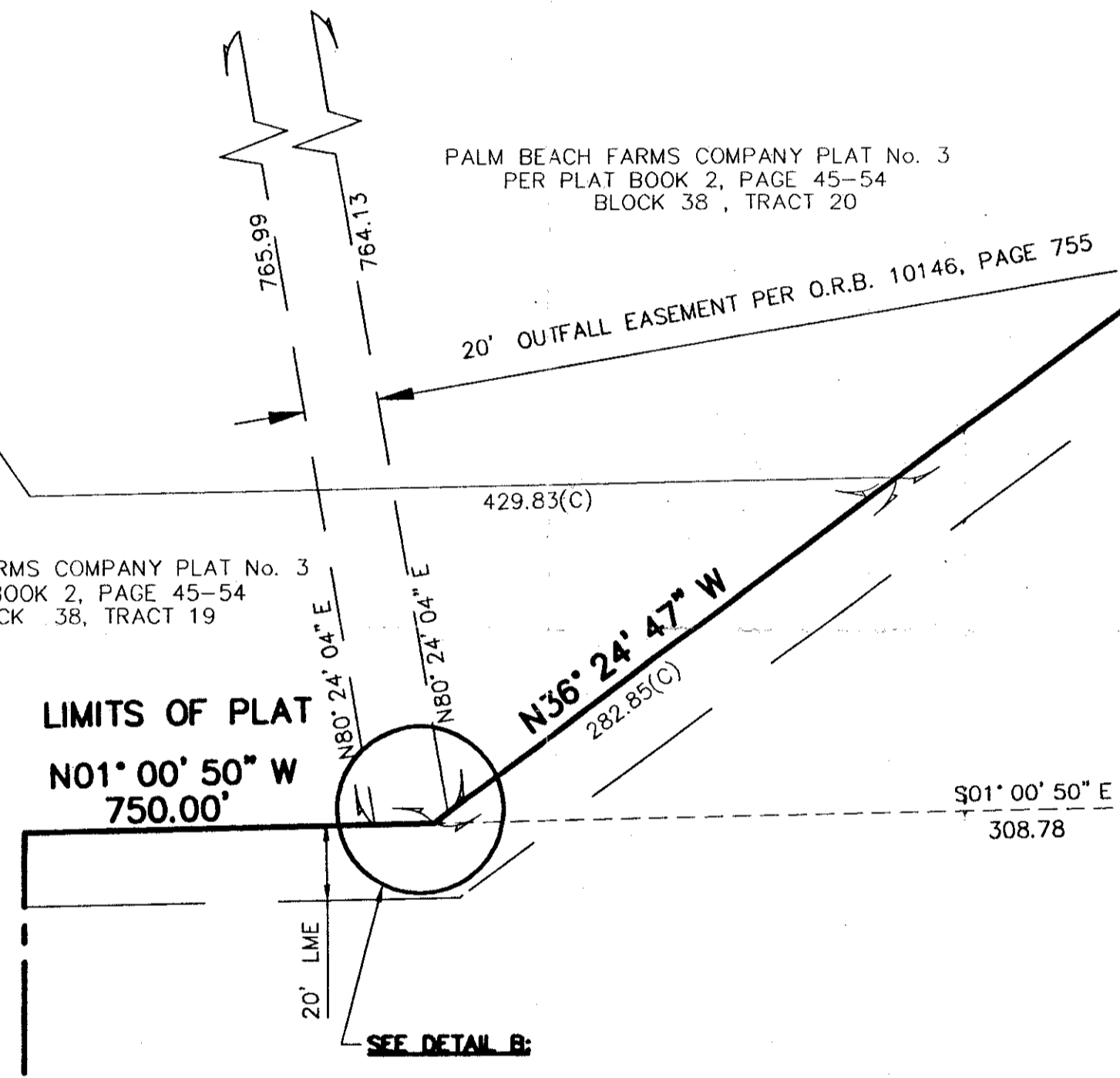
DETAIL B:
(NOT TO SCALE)

(30' RIGHT OF WAY PER)
PALM BEACH FARMS COMPANY PLAT No. 3
PER PLAT BOOK 2, PAGE 45-54

PALM BEACH FARMS COMPANY PLAT No. 3
PER PLAT BOOK 2, PAGE 45-54
BLOCK 38, TRACT 45

SMITH DAIRY WEST P.U.D.- PLAT No. 4
PER (PLAT BOOK 81, PAGES 170-176)

PET. 94-77
AVOC. #0001
5/2/2K



LIMITS OF PLAT
N01° 00' 50" W
750.00'

WATER MANAGEMENT TRACT No. 8
TO BE MAINTAINED BY SMITH FARM MASTER ASSOCIATION, INC.

WITNESS PRM
GRID N: 818837.84
GRID E: 927418.43

SEE SHEET 2 OF 4

SEE SHEET 3 OF 4

SEE SHEET 3 OF 4

SEE SHEET 3 OF 4

SEE SHEET 3 OF 4

- LEGEND:
- ◻ = PERMANENT REFERENCE MONUMENT "P.L.S. 4828"
 - ◻ = PERMANENT CONTROL POINT "P.C.P. 4828"
 - R = RADIUS
 - A = ARC LENGTH
 - Δ = DELTA (CENTRAL ANGLE)
 - PC = POINT OF CURVATURE
 - PT = POINT OF TANGENCY
 - PSM = PROFESSIONAL SURVEYOR & MAPPER
 - PLS = PROFESSIONAL LAND SURVEYOR
 - UE = UTILITY EASEMENT
 - DE = DRAINAGE EASEMENT
 - LME = LAKE MAINTENANCE EASEMENT
 - N = NORTHING (GRID)
 - E = EASTING (GRID)
 - (C) = CALCULATED
 - (R) = RADIAL
 - MREE = MAINTENANCE AND ROOF EAVE EASEMENT
 - LMAE = LAKE MAINTENANCE ACCESS EASEMENT

GRAPHIC SCALE



GRID N: 818321.25
GRID E: 927099.84

SCALE: 1"=40'
DATE: AUGUST 1997

NICK MILLER, INC.
Surveying & Mapping Consultants

SMITH DAIRY WEST P.U.D.- PLAT No. 6

2560 RCA Blvd., Suite 105 Palm Beach Gardens, Florida 33410 (561) 627-5200 D.B.P.R. Business License No. 4318	DRAWING NUMBER 94014BT
--	---------------------------

0653-010

Poo H
82/37

182-942
Pet. # 94-77
SMITH DAIRY WEST P.U.D.
PLAT No. 6
SHEET 4 OF 4
AUGUST 1997